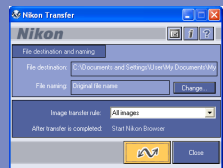


Nikon View 5 — Applications

Nikon View 5 version 5.1.3 contains four separate applications; Nikon Transfer, Nikon Browser, Nikon Viewer and Nikon Editor. Click the illustrations below for detailed instructions on how to use each application.

A - Pictures taken with a Nikon Digital Camera

Nikon Transfer starts automatically when camera is connected to the computer



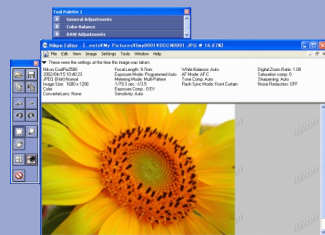
Nikon Transfer

B - Pictures taken with a Nikon Digital Camera




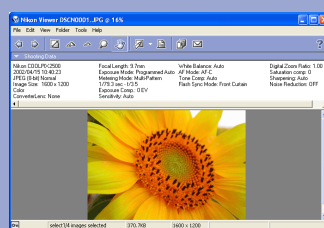
Connect the camera to your computer and transfer your pictures using the TRANSFER button

Transfer Button




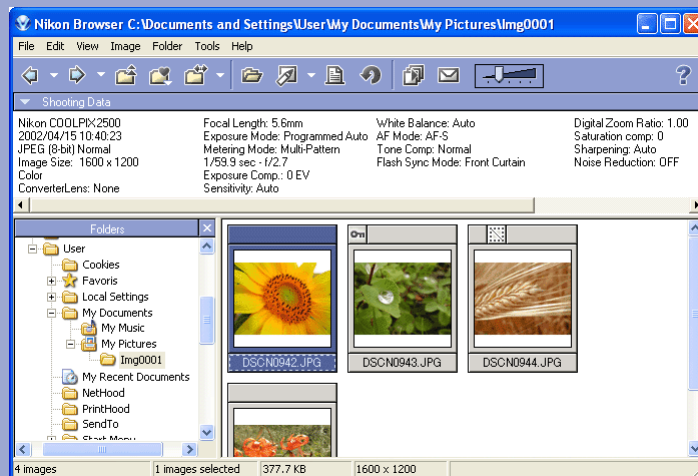
Nikon Editor

Select the image you want to edit from the Browser thumbnail list and click the  icon



Nikon Viewer

Choose the image you want to view from the Browser thumbnail list and click the  icon



Nikon Browser



E-mail



Print out



Slideshow

